

Remember the envelope!

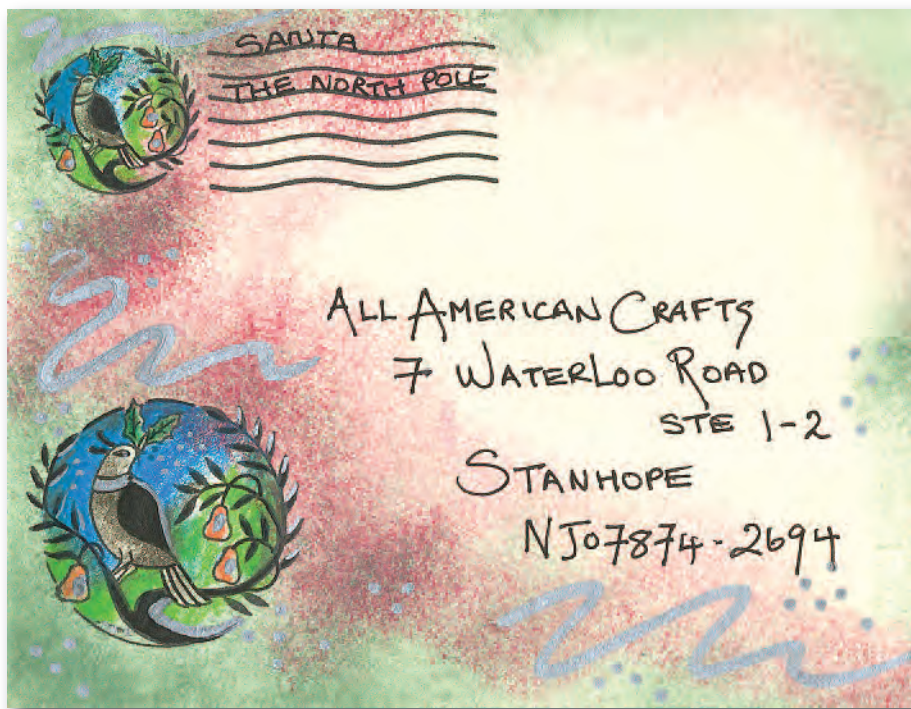
When giving a hand-made card, remember the envelope! Often forgotten, it is the first thing the recipient sees and is a perfect canvas for expressing your creativity. Your mail carrier will also appreciate it!

Decorative Stamped Envelope

Designed by Elaine Woodhouse
www.carvedstamps.com

Materials

- Envelope in yellow or a light color
- CarvedStamps.com Rubber Stamp: Pear Tree Partridge (#CE-0039) and Partridge Cancellation (#CE-0040)
- Tsukineko StazOn Ink Pad, Black
- Color Box Chalk Ink Pads
- Prismacolor Pencils
- Miscellaneous: stipple brush, silver metallic marker, fine-point black permanent marker



Instructions

1. Stamp images on envelope, placing where shown in Fig. 1.
2. Color the images with Prismacolor pencils. Refer to Fig. 2 for color suggestions.
3. Stipple the envelope with chalk inks. Refer to Fig. 3.
4. Redefine the black-inked lines with the fine-point black permanent marker.
5. Use the silver marker to add highlights, filler dots, and background swirls.



Fig. 1



Fig. 2



Fig. 3